

DataVantage® for DB2

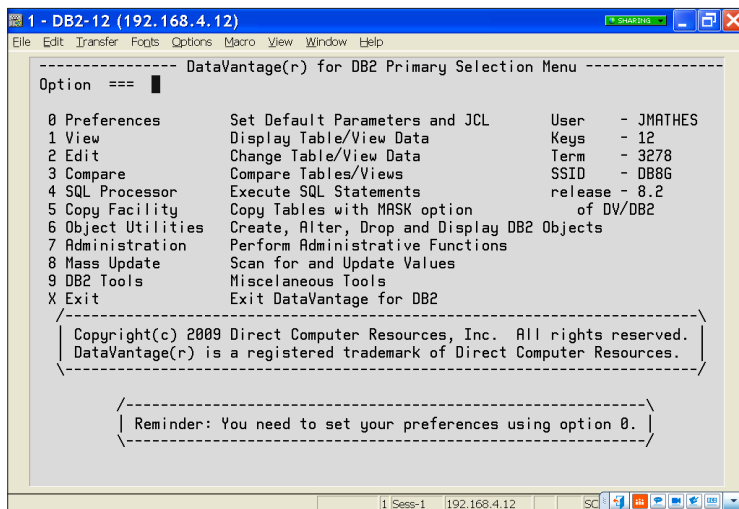
PRODUCT OVERVIEW

Application Testing/Data Privacy

DataVantage® for DB2 masks sensitive data using, but not impacting, any and all available applications throughout ongoing testing and development cycles. During the Copy process, DataVantage for DB2 can mask Columns and replace 'new' Tables anywhere through one simple operation. Users can extract full production copies of the database or subsets of data while maintaining referential integrity. DataVantage for DB2 includes computational scrambling and replacement of personally identifiable information (PII) using category controls as needed. The DataVantage for DB2 software offers all of the features of comparable solutions affordably.

DataVantage for DB2 features

- Masks sensitive data
- Supports DB2 9.x including long names
- Supports bi-directional Referential Integrity during copy process, using DB2-defined and application-defined references
- Creates copies of tables or subsets, on same or different DB2 subsystems
- Allows use of an Image Copy dataset for Copy facility
- Offers compare facility for like Tables
- Includes Mass Update Function
- Enables Hex editing of cells
- Operates in ISPF and batch mode
- Creates, displays, deletes and alters Objects
- Provides Authorization Facilities
- Includes an 'ISPF-style' editor

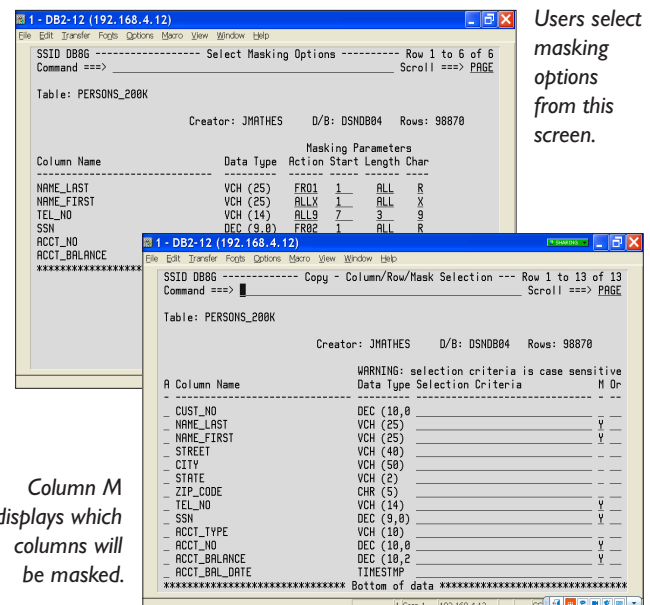


DataVantage for DB2 Main Menu

How can DataVantage for DB2 be used?

Data Masking & Test Database Creation

- Masks data during the copy process
- Masking can be program-generated or from a value of other Tables
- Extracts production data using user-specified selection criteria
- Supports bi-directional Referential Integrity in copy process, both database and application-defined, creating parent and children tables
- Allows image Copy input Table selection
- Allows user specification for Target Table placement (SSID, DB, TableSpace)



Direct Computer Resources, Inc.

www.DataVantage.com • 1-800-501-1502

Copy Tables

- Provides multiple Column/Row selection techniques
- Copies associated Tables referenced by DB2 referential integrity
- Copies associated Tables which are Application-referenced
- Provides utilities to define and save Application-referenced Tables
- Offers an option for using an 'Image Copy' dataset for row selection
- Enables user-defined placement of the copied Tables (SSID, DB, TableSpace)

Editing and Browsing Databases

- Employs an ISPF-style editor for navigation
- Includes Find and Mass Update facilities
- Enables views and edits of long value cells
- Offers Hex edit capabilities
- Uses single-step comprehensive primary commands

```

1 - DB2-12 (192.168.4.12)
File Edit Transfer Formats Options Macro View Window Help
SSID DB8G ----- Begin View/Edit -----
Command ==> _____ Scroll ==> PAGE

Table/View . I*_____ (Required. Enter pattern for selection list.)
Creator . . . _____ (Optional. Enter pattern for selection list.)
Data Base. . _____ (Optional. Enter pattern for selection list.)

Column/Row Selection . . . . . N (Y=Show Column/Row Selection Panel)
Anchor Column Order. . . . . A (A=Ascending, D=Descending)

When in Edit Options: In Edit (May be specified in View but ignored)

Edit Mode. . . . . I (I=Immediate, D=Deferred)
Locking. . . . . N (N=None, S=Shared, E=Exclusive)

Save Activity to Log File? . . N (N=No Y=Save in Log File)
Print Log at end of Edit? . . N (N=No Y=Print Log)
Empty Log before starting? . . N (N=No Y=Empty Log)

1 Sess-1 192.168.4.12 SCOTCP05 2/15
  
```

Comparing Databases

- Compares like tables
- Provides Row/Column selection options for comparing data
- Executes in either batch or online
- Simplifies regression testing
- Generates a table containing the differences

```

1 - DB2-12 (192.168.4.12)
File Edit Transfer Formats Options Macro View Window Help
SSID DB8G ----- Compare Column Resolution - Press ENTER to continue
Command ==> _____ Scroll ==> PAGE

New Table: C16_TDEPT16
Creator: JMATHES D/B: DSNDB04 Rows: 16

Old Table: TDEPT16
Creator: JMATHES D/B: DSNDB04

New Table Column Name      New Type Old Table Column Name      Old Type
-----
DEPTNO                      CHR (3)  DEPTNO                      CHR (3)
DEPTNAME                     VCH (36) DEPTNAME                     VCH (36)
DIVNO                        CHR (3)  DIVNO                        CHR (3)
LOCATION                       CHR (16) LOCATION                       CHR (16)
***** BOTTOM OF DATA *****
1 Sess-1 192.168.4.12 SCOTCP05 2/15
  
```

Direct Computer Resources, Inc.
www.DataVantage.com
1-800-501-1502