

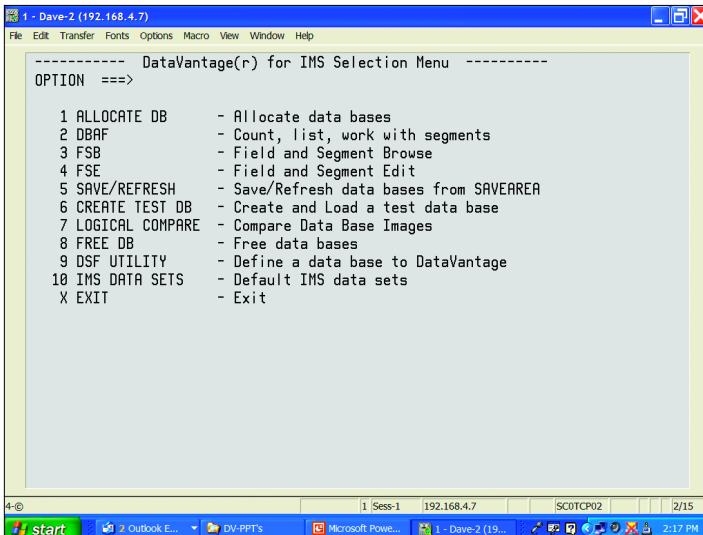
DataVantage® for IMS

PRODUCT OVERVIEW

Application Testing/Data Privacy

DataVantage for IMS offers Data Privacy by masking sensitive data while improving the test data management cycle. Data masking occurs during the copy process of IMS databases to be used for testing, training and demonstration purposes. DataVantage for IMS is an IMS® and DL/I tool that enables quality application testing and development with an immediate ROI. Direct Computer Resources, Inc. defined the data management and testing market more than 20 years ago, and has assisted hundreds of Fortune 1000 companies with their data management challenges.

DataVantage for IMS features



- Data Masking protects sensitive data
- IMS Release Independent
- Operates in ISPF, Batch, MPP and CICS environments
- Browse & Edit all IMS databases
- Create test databases
- Logical Compare of test databases
- Enhanced Audit Trail facilities
- Copy book mapping of segments
- Analysis of segments to ensure correct format and data content
- Refresh test databases from master
- Checkpoint Restart capabilities

How can DataVantage for IMS be used?

Data Privacy & Test Database Creation

- Masks sensitive data for Data Privacy
- Extracts production data quickly using keys or specific criteria
- Offers Copy book support
- Defines new databases from existing databases
- Saves and restores test databases
- Provides exits to import additional data
- Restructures database segments

Direct Computer Resources, Inc.

www.DataVantage.com

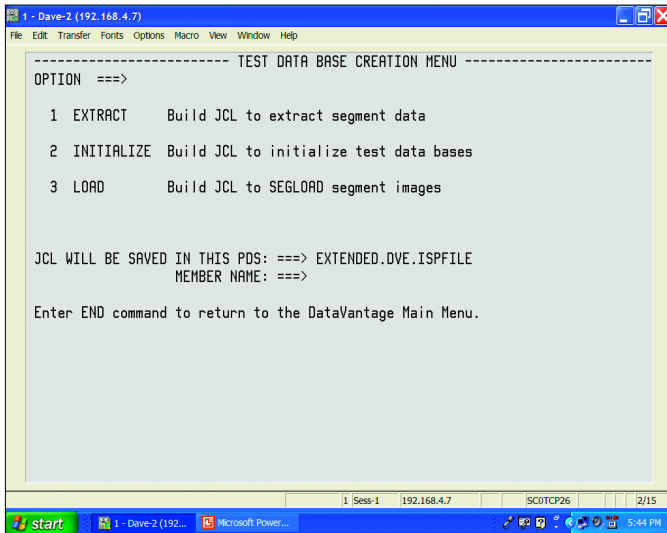
1-877-704-0077

Editing and Browsing Databases

- Update, Delete and Insert Segments
- Copy book support
- Analysis of segments ensuring correct formatting
- Profiles databases for segment types and quantity
- Alternative FSE editor for quickly updating IMS segments
- Global find and replace facility

Comparing Databases

- Compare before and after images of test databases
- User selectable compare range
- Simplify regression testing
- Verify database restructuring
- Exclude segment or fields for comparison



```
1 - Dave-2 (192.168.4.7)
File Edit Transfer Fonts Options Macro View Window Help
----- TEST DATA BASE CREATION MENU -----
OPTION ==>

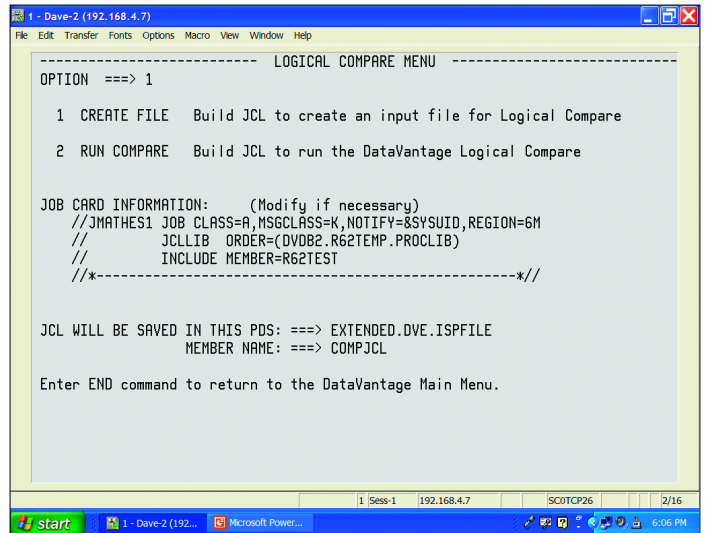
1 EXTRACT      Build JCL to extract segment data
2 INITIALIZE   Build JCL to initialize test data bases
3 LOAD        Build JCL to SEGLOAD segment images

JCL WILL BE SAVED IN THIS PDS: ==> EXTENDED.DVE.ISPFILE
MEMBER NAME: ==>

Enter END command to return to the DataVantage Main Menu.

1 Sess-1 192.168.4.7 SCOTCP26 2/15
```

Create Test Databases



```
1 - Dave-2 (192.168.4.7)
File Edit Transfer Fonts Options Macro View Window Help
----- LOGICAL COMPARE MENU -----
OPTION ==> 1

1 CREATE FILE  Build JCL to create an input file for Logical Compare
2 RUN COMPARE  Build JCL to run the DataVantage Logical Compare

JOB CARD INFORMATION:      (Modify if necessary)
//JMATHES1 JOB CLASS=A,MSGCLASS=K,NOTIFY=&SYSUID,REGION=6M
//
//      JCLLIB ORDER=(DVDB2.R62TEMP.PROCLIB)
//      INCLUDE MEMBER=R62TEST
//*-----*//

JCL WILL BE SAVED IN THIS PDS: ==> EXTENDED.DVE.ISPFILE
MEMBER NAME: ==> COMPJCL

Enter END command to return to the DataVantage Main Menu.

1 Sess-1 192.168.4.7 SCOTCP26 2/16
```

Logical Compare

Direct Computer Resources, Inc.

www.DataVantage.com

1-877-704-0077